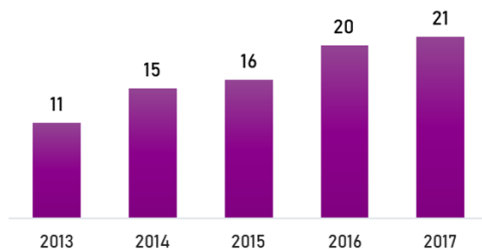


# Suicide in Fond du Lac County: Facts and Figures

Data for this sheet was obtained from the Wisconsin Interactive Statistics on Health (WISH) data query system, the CDC's National Center for Health Statistics, the 2017 Community Health Survey, and analysis of preliminary 2017 data by members of the Destination Zero Stakeholder committee.

The number of suicides in Fond du Lac County has increased in each of the last five years.



Suicide deaths in Fond du Lac County from 2007-2016 reflect a total of **4,292 years** of potential life lost before age 65. In 2016 alone this number was **523 years**.

**5% = 5,000**

The 2017 Community Health Survey found that 5% of respondents (approximately 5,000 county residents) had considered suicide in the previous year, up from 3% in 2014.

**7 of the 21** individuals who died by suicide in 2017 were veterans.

Veterans comprise **8%** of the county population, but **33%** of the suicide deaths that year.

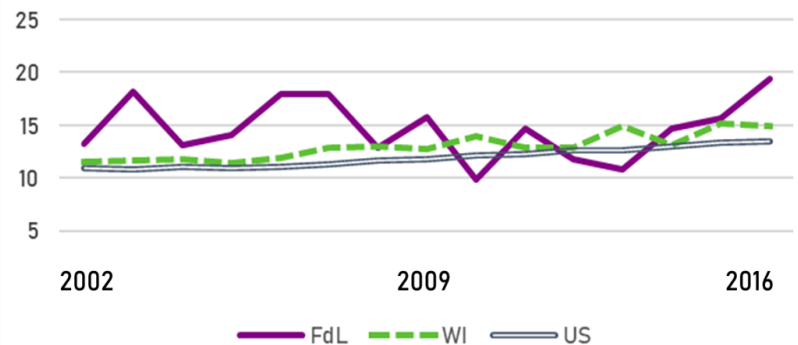
From 2007-2016, the number of males who died by suicide in Fond du Lac County (124) exceeded the number of females (22) by a ratio of

**5.6 to 1**

Statewide during that time the ratio was

**3.6 to 1**

Rate of death by suicide (per 100,000) in Fond du lac County exceeded the Wisconsin rate in 11 of the last 15 years, and the US rate in 12 of the years.



**9th**

In 2016, suicide was the 9<sup>th</sup> leading cause of death in Fond du Lac County, and the 5<sup>th</sup> leading cause of death for those ages 35-64.

**5th**

Statewide these figures were 11<sup>th</sup> and 5<sup>th</sup>, respectively. Across the US, suicide is the 10<sup>th</sup> leading cause of death,

From 2007-2016, Fond du Lac County residents were 1.5 times more likely to die by suicide than in a motor vehicle crash.

**1.5x**

During that same period, men ages 35-64 were 3 times more likely to die by suicide than in a motor vehicle crash.

**3x**

*Suicide is preventable, and help is available. If you or someone you know is in crisis, contact*

**Fond du Lac County Crisis Intervention at (920)929-3535**

*or the National Suicide Prevention Lifeline at 1-800-273-TALK (8255)*

*Go to [www.csifdl.org](http://www.csifdl.org) to learn more about CSI's efforts to promote mental health and prevent suicide in Fond du Lac County, and to access local resources.*



CSI's Destination Zero initiative is funded in whole by the Advancing a Healthier Wisconsin Endowment at the Medical College of Wisconsin.

