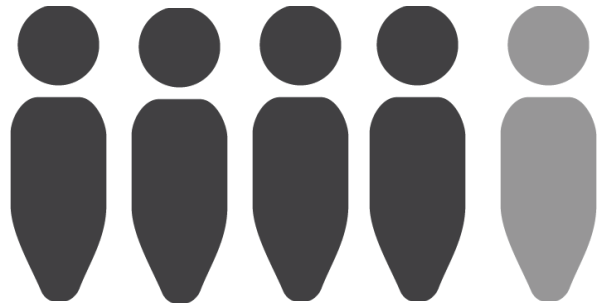


THE IMPACT



35% of parents report they were either not fully aware or not at all aware of their child's emotional health issues prior to YScreen program participation.

Four out of five parents reported their child is doing better now than at the time of the initial screen.

"Without this program, it's hard telling where things would have ended up."

My child got the help he needed thanks to this program."

" This screen provided us the information we needed in order to obtain treatment for my child. I honestly feel it probably prevented an attempt at suicide. Thank you for all you do."

" A valuable program to identify issues that day to day life may not reveal. It is so important during these adolescent years to have awareness of their true emotional state of mind."

Parental Checklist for Youth:

☒ **ANNUAL PHYSICAL**

☒ **EYE EXAM**

☒ **DENTAL APPTS**

☒ **EMOTIONAL HEALTH SCREENING**

MAJOR FUNDING PROVIDED BY:



Special thanks to Fond du Lac Area YScreen Program Advisory Board member agencies.

Adashun Jones Real Estate
Aurora Healthcare
FDL County Dept. of Community Programs
FDL County Juvenile Court Services
Fond du Lac High School

FDL School District - Health Programs
Laconia High School
NAMI Fond du Lac
National Exchange Bank
SSM Health

Questions about YScreen? Contact YScreen Staff at (920)906-6571 or kohlman@fonddulac.k12.wi.us



2020-2021 | FOND DU LAC COUNTY

2nd

Leading cause of death for ages 15-24:

SUICIDE

2019 Center for Disease Control (CDC)

YSCREEN IMPACT:

With community support and prevention implementation, student reports of considering suicide decreased from **21% in 2002** to **14% in 2020**.

14% IN 2020

21% IN 2002

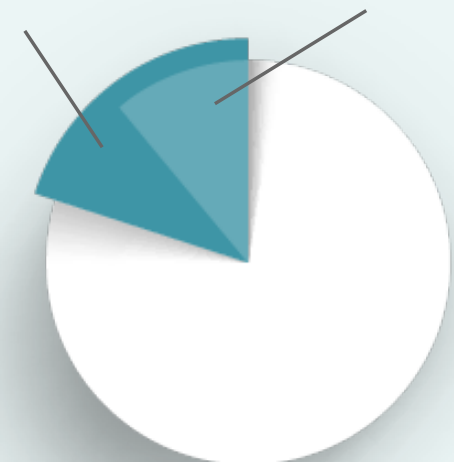
SCREEN. IDENTIFY. REFER.

Screening is designed to help identify symptoms of depression, anxiety, and suicide risk and is voluntary. Both parents and students have to agree to participate. After completion, youth receive a short debriefing. Youth with identified concerns meet with a mental health professional to determine if further evaluation is needed. If a need for evaluation is identified, parents are contacted and a case manager facilitates access to mental health services, ideally within 30 days, to ensure the youth is connected with services as needed.

– Over the past 19 years –

Screening Data, Fond du Lac County

2,979 YOUTH REFERRED
1,784 YOUTH CONNECTED TO SERVICES



15,307

Youth Participation in Screenings since 2002

WHY THE NEED?

In response to the 2002 student Alcohol, Tobacco and other Drug (ATOD) and Health Experience and Attitudes Survey and the unthinkable number of students reporting considering suicide, the Fond du Lac School District, in partnership with community mental health providers sought evidence-based best-practices in youth suicide prevention. Universal mental health screenings topped that list. Emotional health screening was implemented at Fond du Lac High School in 2002/03 school year and has expanded to 12 school sites over the last 19 years.

The Fond du Lac Area YScreen program has been built on collaborative partnerships. The advisory board –which is a blend of mental health professionals, school administrators and community agency representatives – is the guiding force. Since 2002, the percentage of students surveyed that reported having considered suicide decreased from 21% to 14%.

VISION + GOALS OF THE YSCREEN PROGRAM

- 1 Improve the overall emotional health of youth by offering all youth emotional health screening by the time they turn 18.
- 2 Effectively screen youth for interfering emotional problems and facilitate effective interventions & treatment.
- 3 Reduce the stigma of emotional health issues and increase public knowledge and awareness.

SCREENING SITES INCLUDE:

- Public & private schools, including charter & alternative education sites
- Juvenile court services unit

91% of numbers represent Fond du Lac County; remaining numbers from Waupun

2020/2021 FOND DU LAC CO. EMOTIONAL HEALTH SCREENING

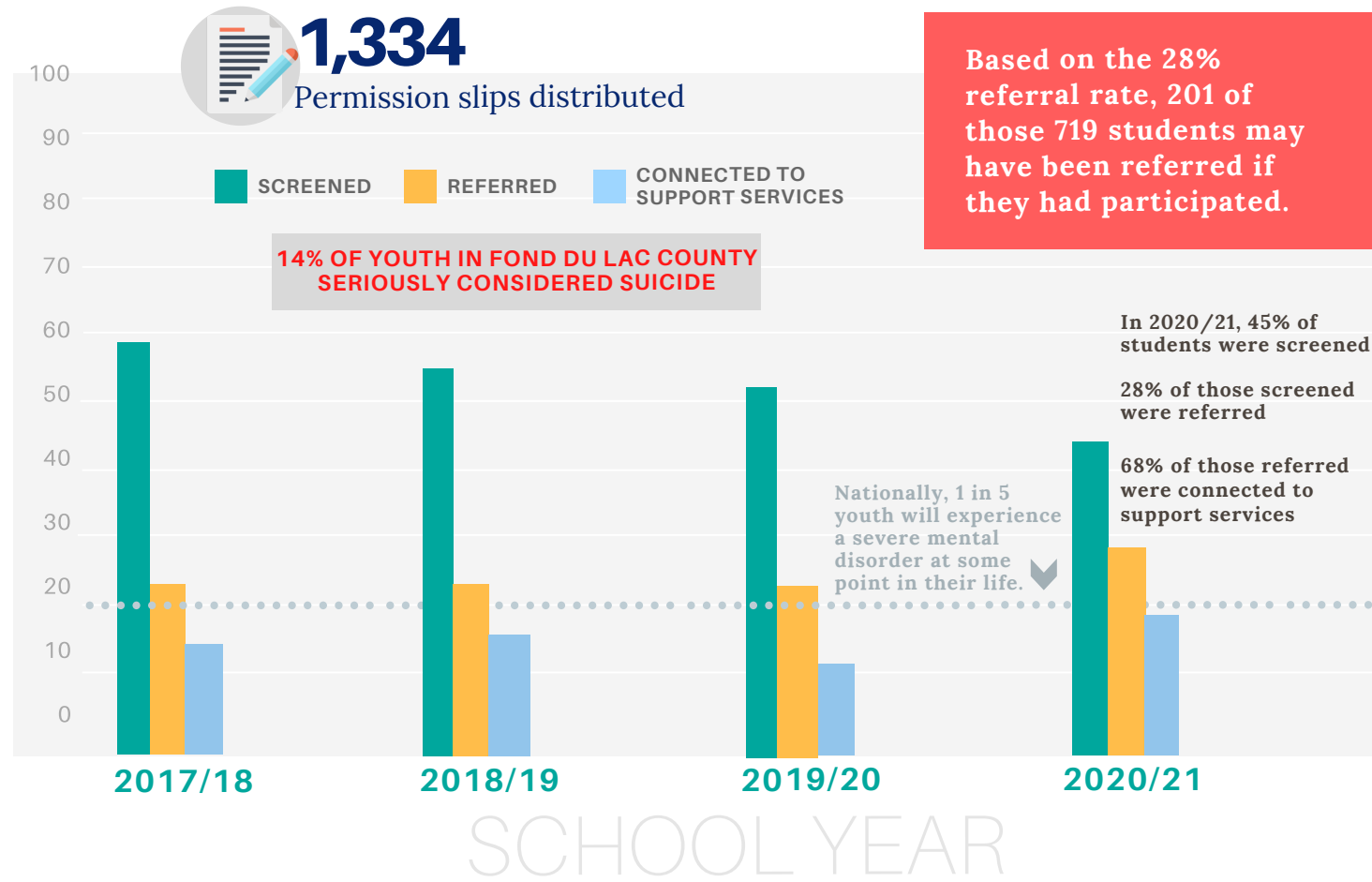
Since 2002, the cumulative participation rate in Fond du Lac County is 61%. The 2020/21 overall referral rate of 26% is the highest since the program began.



Screening data in schools throughout the county:

Emotional health screening is offered to all 9th grade students and available to any student 12-18, upon request.

Below are the 2020/21 screening outcomes for the 12 school sites – including school & alternative education sites.



Over 50% of parents either did not return a permission form or opted out, resulting in 719 students who were NOT screened.

Based on the 28% referral rate, 201 of those 719 students may have been referred if they had participated.