

# YScreen @ Campbellsport High School

## 2021/2022



### 95%

of eligible students  
**Returned the  
Permission Slip**



### 39%

of eligible students  
**Participated in  
Screening**



### 33%

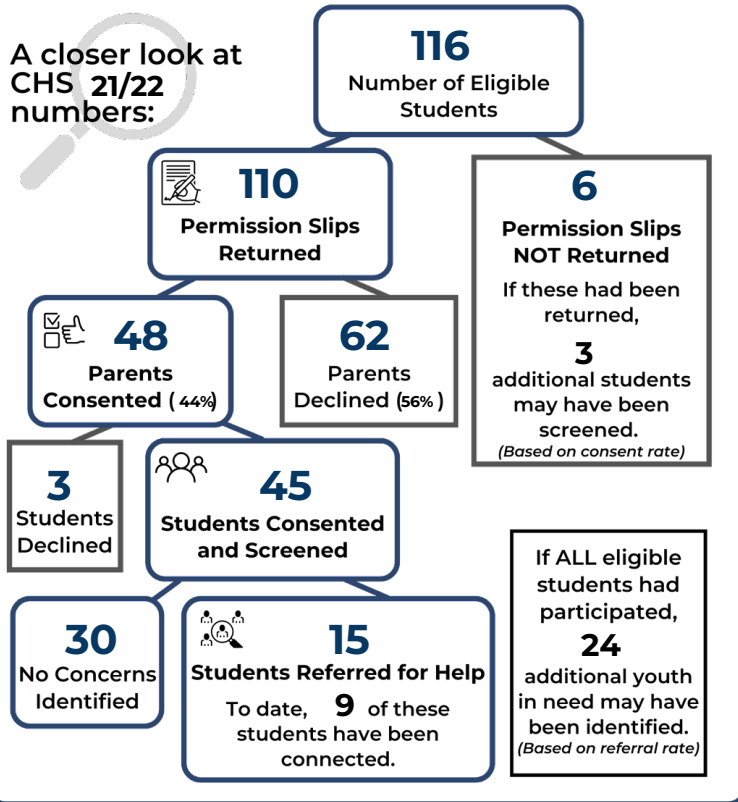
of those screened  
**Identified as  
Needing Help**



### 60%

of those identified  
**Connected to  
Mental Health  
Services**

A closer look at  
CHS 21/22  
numbers:



### CHS Students Since 2005

**1660** **87%**  
Returned Slip



**815** **42%**  
Screened



**165** **20%**  
Identified in Need



**100** **61%**  
Connected to Help

### All FDL County Sites 2021/2022

