

YScreen @ Oakfield High School

2021/2022



90%

of eligible students
**Returned the
Permission Slip**



56%

of eligible students
**Participated in
Screening**



30%

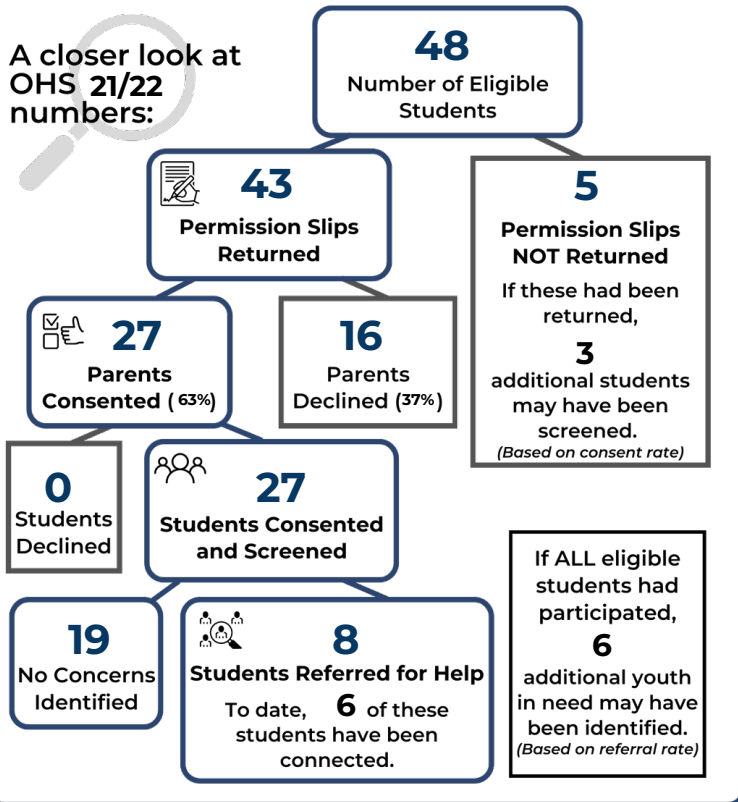
of those screened
**Identified as
Needing Help**



75%

of those identified
**Connected to
Mental Health
Services**

A closer look at
OHS 21/22
numbers:



OHS Students Since 2005

593 **85%**
Returned Slip



436 **63%**
Screened



67 **15%**
Identified in Need



37 **55%**
Connected to Help

All FDL County Sites 2021/2022

80% **54%** **25%** **54%**

Returned Slip

Participated in Screening

Identified in Need

Connected to Services